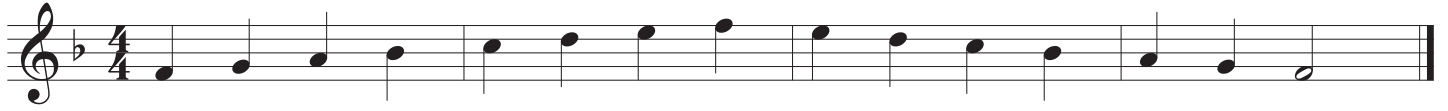


The Most Useful Scales You Probably Didn't Know

F Ionian



G Dorian



C Mixolydian



Putting it All Together



Musical notation for the 'Putting it All Together' exercise in 4/4 time. It consists of two staves: a treble clef staff and a bass clef staff. The key signature is one flat (Bb). The treble staff contains a sequence of eighth-note patterns: a four-note ascending eighth-note run (F2-G2-A2-Bb2), followed by a four-note descending eighth-note run (C3-Bb3-A3-G3), then another four-note ascending eighth-note run (F2-G2-A2-Bb2), and finally another four-note descending eighth-note run (C3-Bb3-A3-G3). The bass staff contains three chords: a triad of F2, C3, and G2 in the first measure; a triad of Bb2, F3, and C3 in the second measure; and a triad of F2, C3, and G2 in the third measure. The piece ends with a double bar line.