

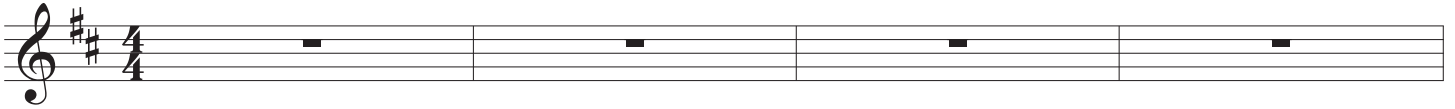
♩ = 105

Swing! ♩ = ♩³

1,2,3,4

FIEST

D D/C# Bm G D D/C# Bm G



A D D/C# Bm G D D/C# Bm G



One, two, three, four, tell me that you love me more. Sleep-less long nights, that was what my youth was for.

9 D Em Bm G D Em Bm G



Old teen-age hopes are live at your door. — Left you with no - thing but they want some more. —

13 A G A G



Oh, oh oh you're chang-ing your heart, Oh, oh oh you know who you are.

B D D/C# Bm G D D/C# Bm G



Sweet-heart bit-ter-heart now I can tell you a-part. Co - zy and cold, put the horse be-fore the cart.

21 D Em Bm G D Em Bm G



Those teen-age hopes have tears in their eyes, — too scared to own up to one lit-tle lie. —

25 A G A G



Oh, oh oh you're chang-ing your heart, Oh, oh oh you know who you are.

C D D/C# Bm G D D/C# Bm G

One, two, three, four, five, six, nine, or ten. Mon-ey can't buy back all the love that you had then

33 D D/C# Bm G D D/C# Bm G

One, two, three, four, five, six, nine, or ten. Mon-ey can't buy back all the love that you had then.

D D D/C# Bm G D D/C# Bm G

One, two, three, four, five, six, nine, or ten. Mon-ey can't buy back all the love that you had then.

41 D D/C# Bm G D D/C# Bm G

One, two, three, four, five, six, nine, or ten. Mon-ey can't buy back all the love that you had then.

45 A G A 1. G

Oh, oh oh you're chang-ing your heart, Oh, oh oh you know who you are. _____

49 2. G

know who you are. _____

E D Em Bm G D Em Bm G

(Play only during first repeat)

55

D D/C# Bm G D D/C# Bm G

Musical staff with treble clef, key signature of two sharps (F# and C#), and a sequence of chords: D, D/C#, Bm, G, D, D/C#, Bm, G. The staff contains four measures, each with a single chord symbol above it. The first measure is D, the second is D/C#, the third is Bm, and the fourth is G. The fifth measure is D, the sixth is D/C#, the seventh is Bm, and the eighth is G. The staff ends with a double bar line.